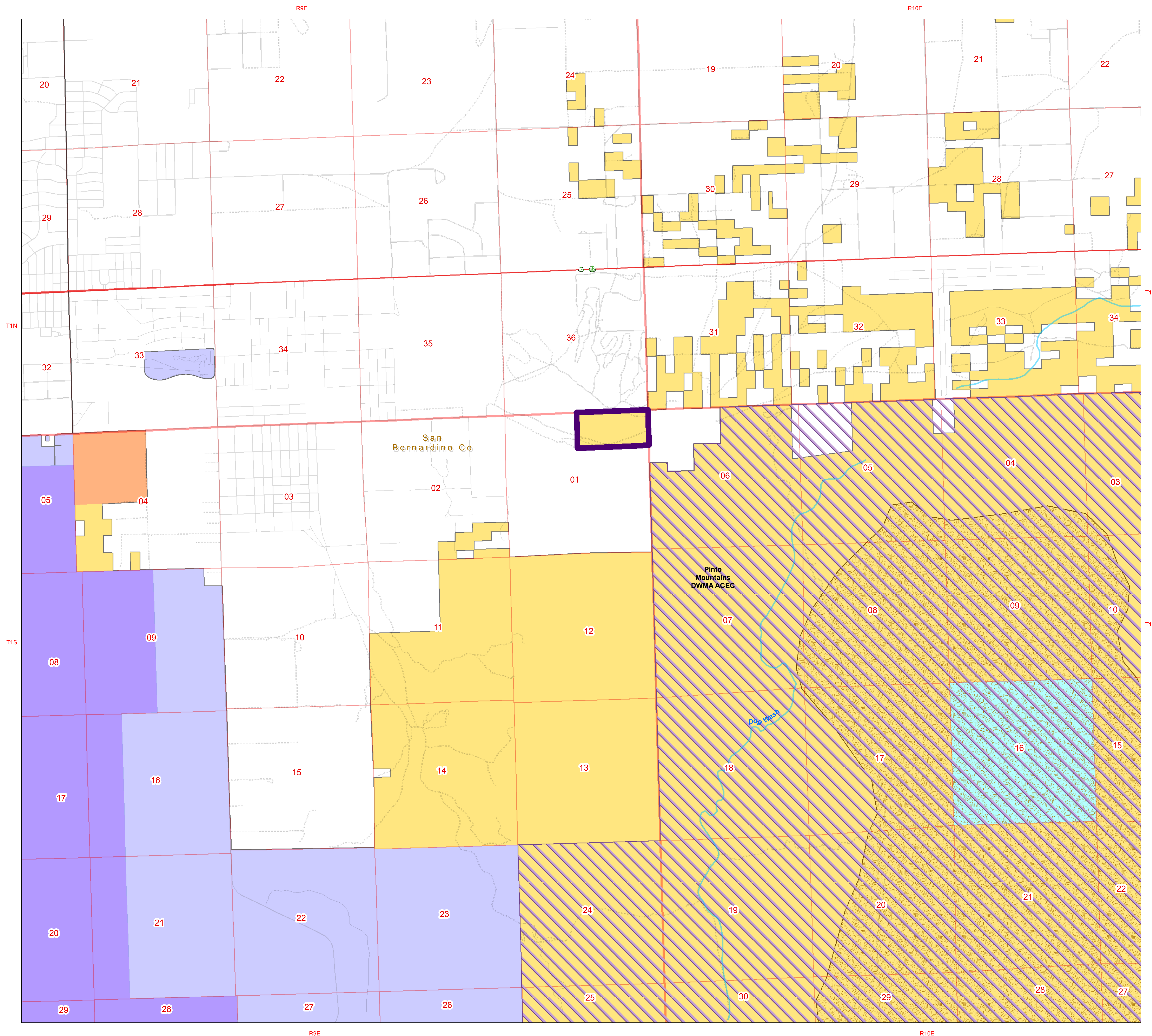


Proposed Conveyance to Twentynine Palms September 18, 2015

This map prepared at the request of Representative Paul Cook



- Proposed Conveyance to Twentynine Palms
 - DWMA
 - BLM Wilderness Study Areas
- Federal Wilderness**
- National Park Service
- Land Status**
- Bureau of Land Management
 - National Park Service
 - Bureau of Indian Affairs
 - State
 - Local Government
 - Private/Unclassified



0 0.375 0.75 1.5 Miles
 1:15,600 at a page size of 34 in. by 44 in.

Coordinate System: NAD 1983 Transverse Mercator
 Projection: Transverse Mercator
 Datum: North American 1983

No warranty is made by the Bureau of Land Management (BLM). The accuracy, reliability, or completeness of these data for individual use or aggregate use with other data is not guaranteed.