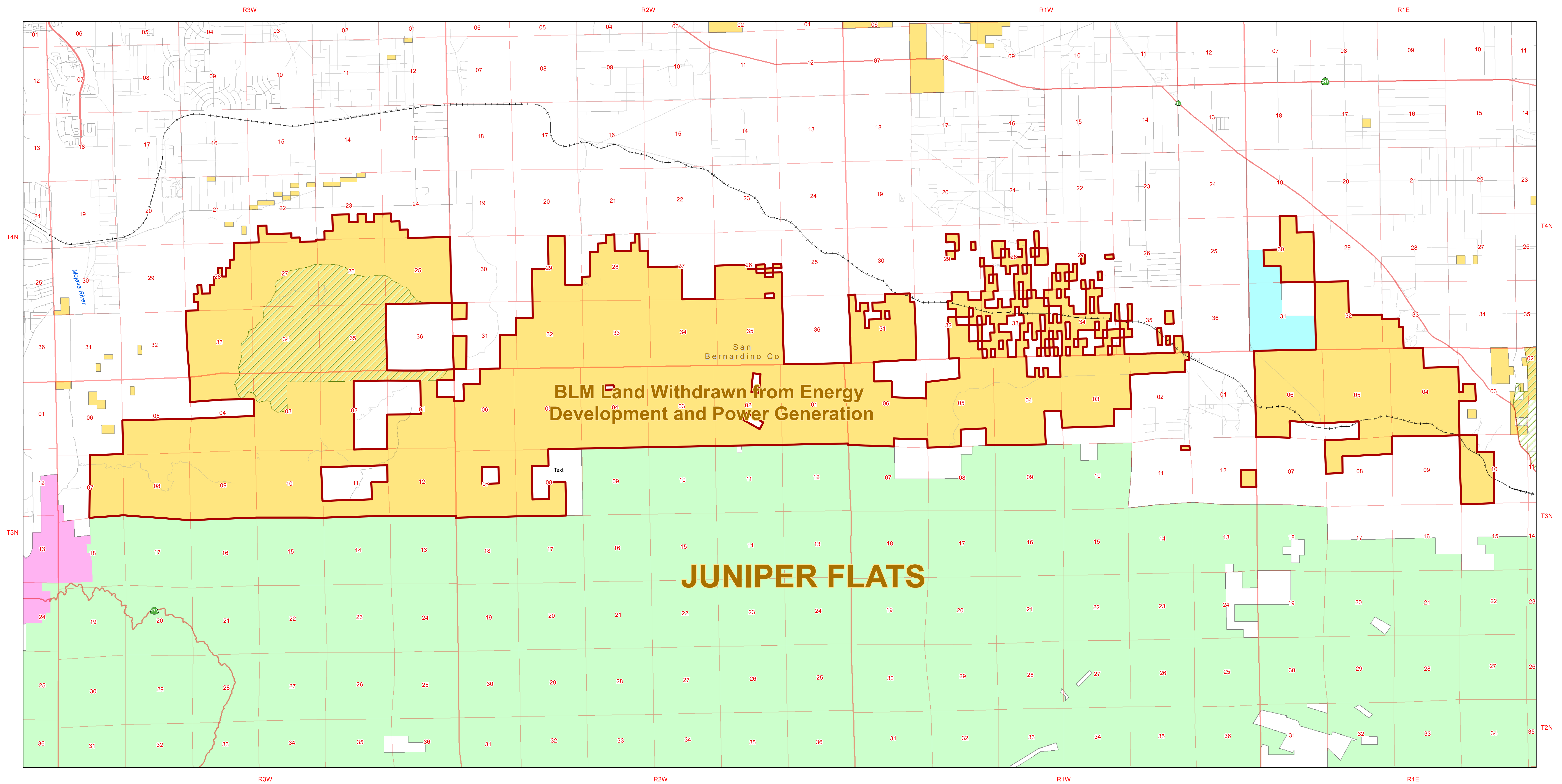





# Juniper Flats

September 21, 2015

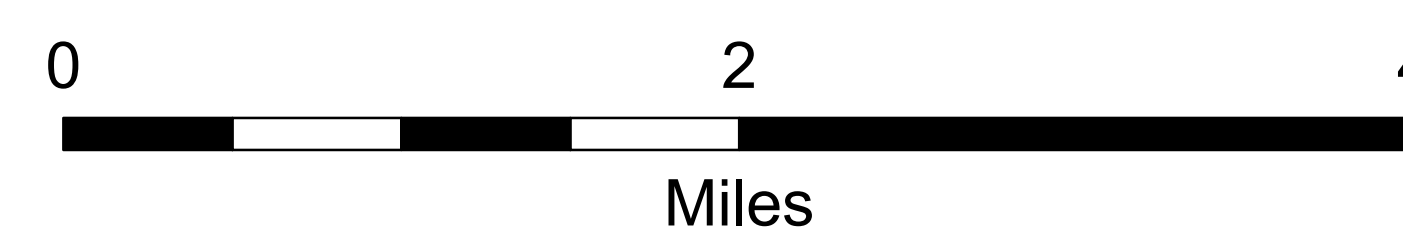
This map prepared at the request of Representative Paul Cook



-  BLM Land Withdrawn from Energy Development and Power Generation
-  Railroads
-  ACEC

### Land Status

-  Bureau of Land Management
-  Forest Service
-  Department of Defense
-  State
-  Private/Unclassified



1:36,000 at a page size of 34 in. by 44 in.

No warranty is made by the Bureau of Land Management (BLM). The accuracy, reliability, or completeness of these data for individual use or aggregate use with other data is not guaranteed.



US Department of the Interior  
**BUREAU OF LAND MANAGEMENT**  
California State Office - Mapping Sciences  
Mapping Sciences Section  
(916) 978-4343  
www.ca.blm.gov  
Date Prepared: 9/21/2015  
Project: JuniperFlats\_CookVersion\_21SEPT2015